

The Bradford II

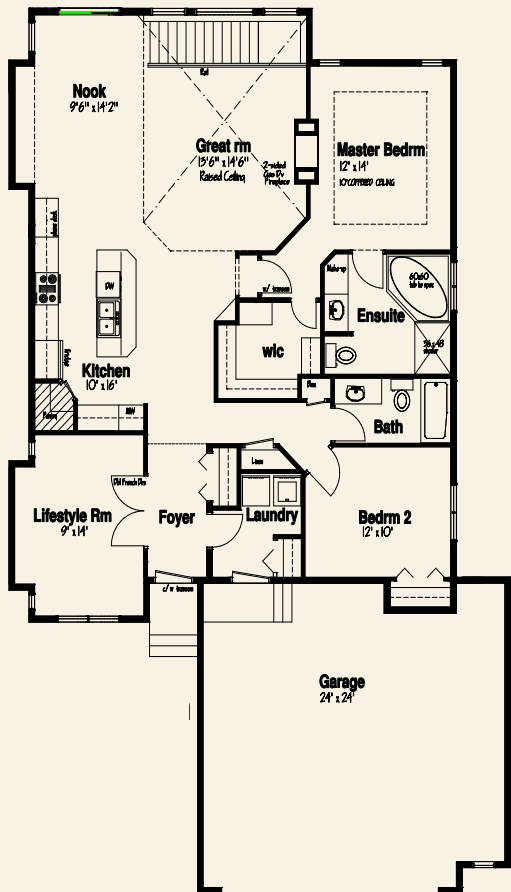
1634 sq. ft. bungalow



Some exterior finishes and features may be optional.

Phone this show home at 780-992-2075
Visit 29 Wesleyan Court, Fort Saskatchewan

Main Floor 1634 sq. ft.



Stylish elegance best suits this fabulous bungalow.

The latest of the Bradford line is loaded with exceptional design and comfort features. The beauty of this home is enhanced by the 9' ceilings which raise up to 10' 6" in the Great Room to create a dramatic effect. The rear stair feature allows for excellent access and light to the Basement. The Master is a luxurious retreat with a 10' coffered ceiling, a huge walk-in closet, and an Ensuite with a 3' shower and a cozy corner jetted tub.

© The plans and elevations on this page may not be reproduced, used, or copied in whole or in part, for construction purposes, without the written expressed permission of Concept Developments Ltd.



Concept Homes
Main Office
10016 130 Avenue
Edmonton, Alberta
Canada T5E 6L5
Ph: 780-478-6069
Fax: 780-473-0445

Concept Homes Master Builder

www.concepthomes.ca