

Over 40 years of building excellence

2012 STARS LOTTERY HOME

Founded in 1969, Concept® Homes is still owned and operated by the Hinteregger family. Their sound business practices and commitment to trades, suppliers, staff and customers produce quality homes at reasonable prices. We are grateful for our community's support, and as such we sponsor local charities, build homeless housing projects and help STARS build their lottery homes. This contribution is our way of showing our appreciation for the neighbourhoods we work and live in.



Concept® Homes Main Office building

Thank you to Concept® Homes' trades and suppliers

Concept® Homes would like to extend a huge thank you to the suppliers and sub-trades for their contribution to the 2012 STARS Lottery Home. This group of dedicated men and women make up the greater Concept family. They gave a tremendous amount of their time, materials and effort to make this lottery home a success.

- | | | | |
|-------------------------------------|--------------------------|----------------------------------|-----------------------------|
| A & A Trenching | C-Bros Contracting Ltd. | Margot & Les Paull, Sutton Group | Signature Lane Furniture |
| A & B Concrete Pumping | City Glass & Supply | McElheran's Fine Furniture | SHAW Cable |
| A. Clark Roofing & Siding | Concept Realty | Midegs Drywall | Shore 2 Shore IT Solutions |
| Alberta New Home Warranty Program | Darlene Cann, Cann Write | Minuteman Press Sherwood Park | Star Mechanical |
| All Out Concrete Pumping | Eldorado Stone | Mission Building Supplies | Steelnova Iron Works |
| Artistic Stairs | Federated Insurance | Mitten Building Products | Strathcona County |
| Atwell Woodworking | Gemco Fireplaces | Monarch Floors | Taylor Developments Ltd. |
| Award Design and Drafting Ltd. | Genstar | North Atlantic Construction | Telco Security Systems |
| BP Building Products of Canada Ltd. | Gienow Windows and Doors | Northland Building Supplies | Tiger Electric Limited |
| Balloon Magic & More | Hallmark Doors | Ogilvie & Company | Two Coats Painting |
| Barcol Doors | Helga Ferguson | Pals Surveys and Associates | Urban Granite Company |
| Beaudeal Interior Design | Homebase Media | Panache Glass Studio | V-Twelve Contracting |
| Bill Lineker Accounting | ICI Paint | Park Lighting | Weiser Lock |
| Bricksmith Masonry | Inland Concrete | Ram Lift and Elevator | Westcon Precast |
| Builders Wholesale Appliances | IXL Masonry | Realstone Systems | Westridge Cabinets |
| Buildtech Resources | J.R.Paine & Associates | Reliable Sheet Metal & Service | Windsor Plywood - Clareview |
| CSJ Cleaning | Lafarge Canada | Ron Usher | Young Guns Concrete |
| C.W. Eavestrouging | Lenbeth Weeping Tile | Sandhills Manufacturing | Zeebee's Siding |

Sincerely, Rick Hinteregger, President Concept Homes, and Dave Hinteregger, Vice-President Concept Homes



#155 Campbell Drive, Sherwood Park, Alberta

CONCEPT HOMES

Building in Edmonton and surrounding areas.

To plan your new home on an acreage, farm, or city lot, contact Margot Paull at 780-231-6546.



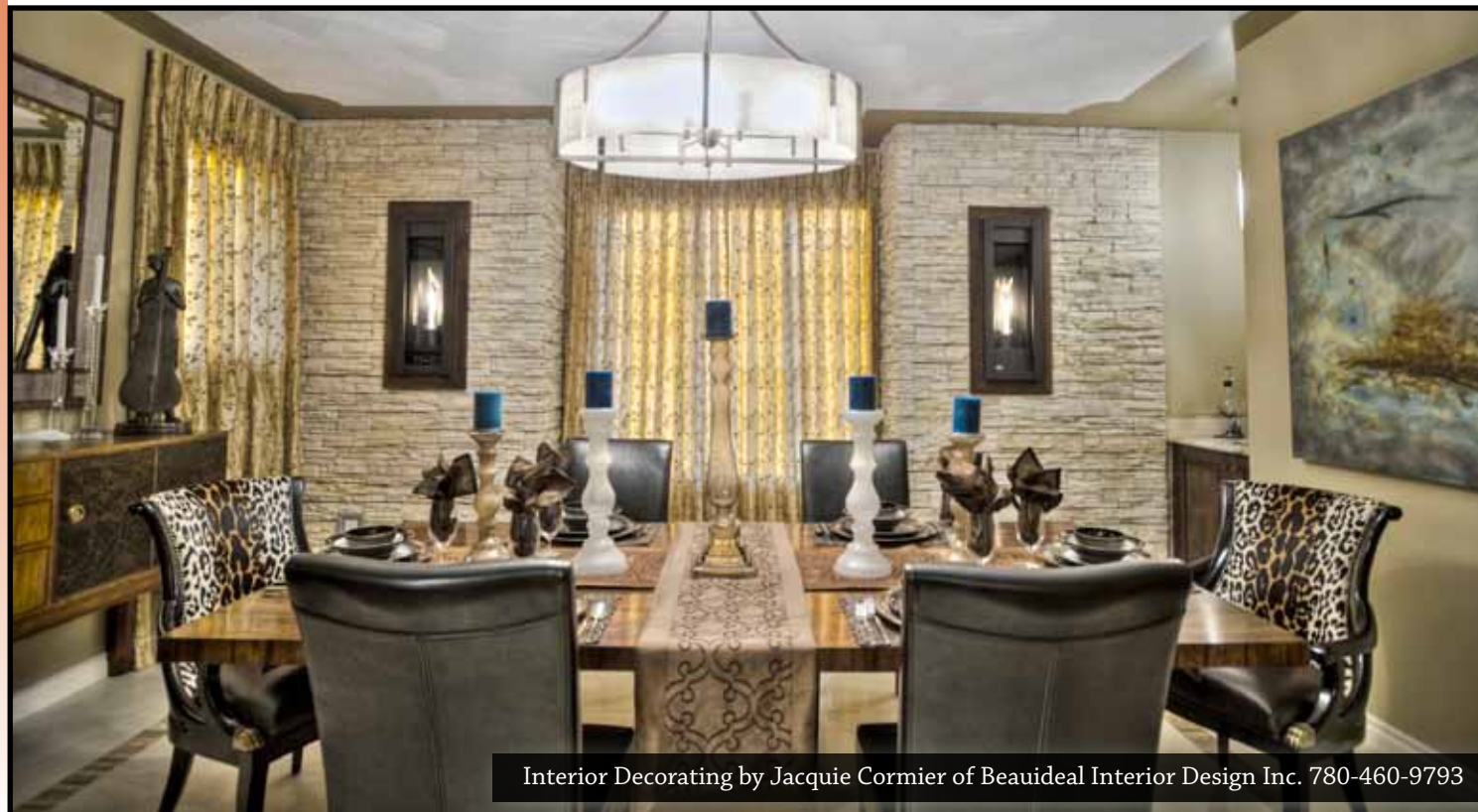
Concept® Homes
 Main Office
 10016 - 130 Avenue
 Edmonton, Alberta
 Canada T5E 6L5
 Phone: 780-478-6069
 Fax: 780-473-0445
 www.concepthomes.ca

Better Ideas
 Better Built



The Wyndham

2,750 sq. ft. two-storey



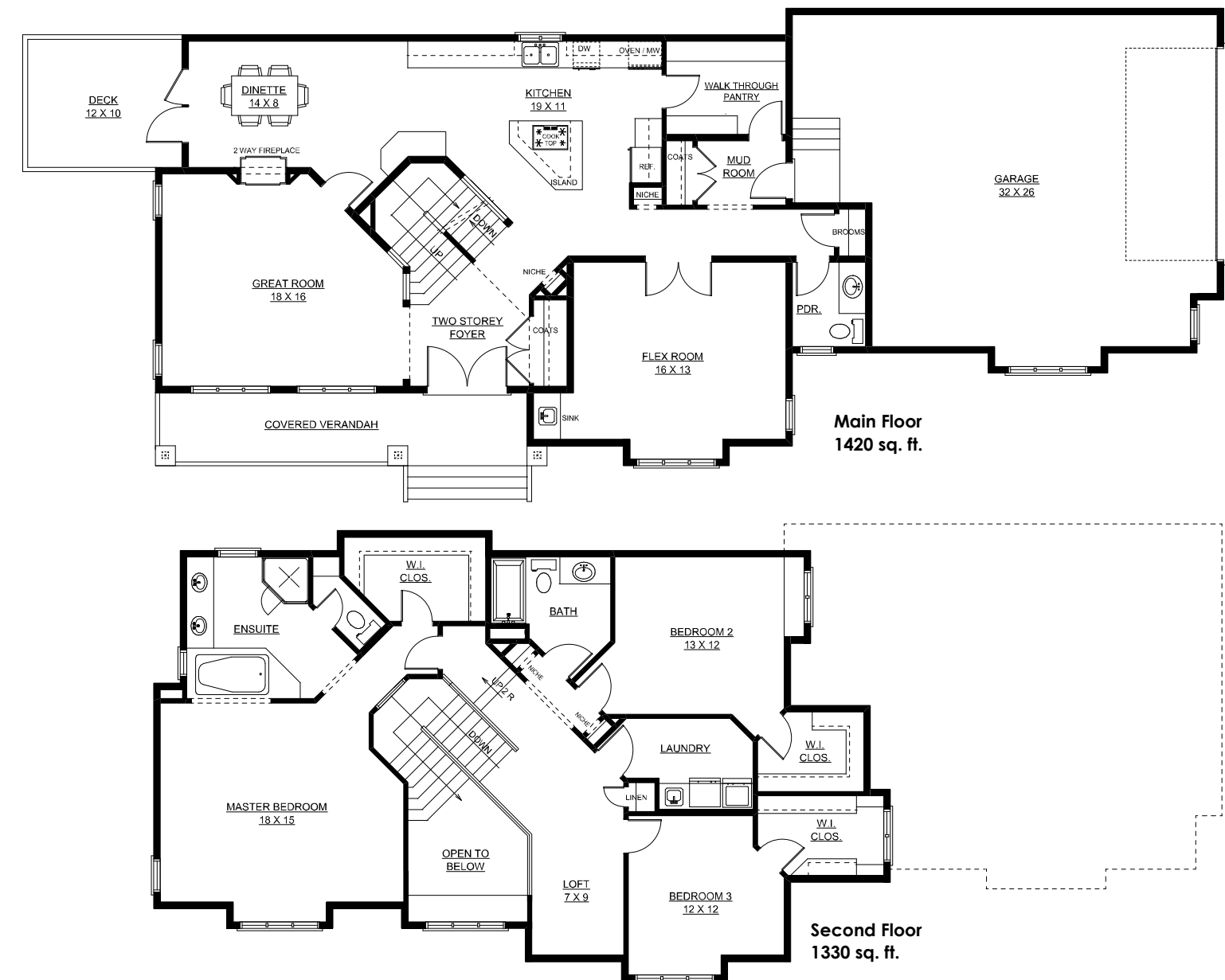
Interior Decorating by Jacquie Cormier of Beauideal Interior Design Inc. 780-460-9793

Concept® Homes is pleased to introduce **The Wyndham** – an exceptionally warm and welcoming retreat crafted exclusively for STARS Lottery by a talented team of staff, suppliers, and trades people who believe in the value of family and home.

The Wyndham is a stunning 2750 sq ft two storey home valued at over \$856,000 retail. It boasts three bedrooms, two-and-a-half bathrooms, a gourmet kitchen, a formal dining room with dual torch fireplace accents set into a stone feature wall, a spacious Great Room with coffered ceilings and a cozy two-sided fireplace, a luxurious master suite as well as countless unique, custom-designed features.

Walnut hardwood floors, nine and 10-foot ceilings on the main floor are just a few of the many highlights. The oversized garage, with room for a workshop area, will be a bonus for the family handyman (or woman). The second floor laundry will save whomever was lucky enough to draw that chore a few trips up and down the stunning staircase. The walkthrough pantry and mud room will allow the organizer to put everything in its place.

Once you've settled in, you will know you've won the lottery. Sincere thanks to everyone who is involved and supports STARS.



© The plans and elevations on these pages may not be reproduced, used or copied in whole or in part, for construction purposes, without the written expressed permission of Concept Developments Ltd. Dimensions as shown are approximate only and may change during construction.