

Over 47 years of building excellence

2017 STARS LOTTERY HOME

Founded in 1969, Concept® Homes is still owned and operated by the Hinteregger family. Their sound business practices and commitment to trades, suppliers, staff and customers produce quality homes at reasonable prices. We are grateful for our community's support, and as such we sponsor local charities, build homeless housing projects and help STARS build their lottery homes. This contribution is our way of showing our appreciation for the neighbourhoods we work and live in.

Concept® Homes Main Office building



Passionate Dedicated Thoughtful Positive
Knowledgeable Trustworthy Dependable

Thank you to Concept® Homes' trades and suppliers

Concept® Homes would like to extend a huge thank you to the suppliers and sub-trades for their contribution to the 2017 STARS Lottery Home. This group of dedicated men and women make up the greater Concept family. They gave a tremendous amount of their time, materials and effort to make this lottery home a success.

- | | | | |
|-----------------------------------|------------------------|-------------------------------|------------------------|
| A & B Concrete Pumping | Comsign | Lechelt Bros. Framing | Ron Usher |
| A. Clark Roofing & Siding | Durabuilt Windows | LED Lighting Canada | Sandhills |
| Alberta New Home Warranty Program | Eldorado Stone | Lenbeth Weeping Tile | Manufacturing |
| All Screwed Piling | Elegance Finishing | M & MD Construction | SHAW Cable |
| All Star Landscaping | Federated Insurance | McElheran's Fine Furniture | Star Mechanical |
| Alta Stucco Systems | Form All Foundations | Minuteman Press Sherwood Park | Steelnova Iron Works |
| Artistic Stairs | Gemco Fireplaces | Mission Building Supplies | T-Rex Contracting |
| BP Building Products of Canada | Hallmark Doors | Mitten Building Products | Telco Security Systems |
| Barcol Doors | Helga Ferguson | Monarch Floors | Tiger Electric Limited |
| Beauideal Interior Design | Homebase Media | Neil Roberts | Two Coats Painting |
| Builders Wholesale Appliances | Image Design | Northland Building Supplies | Urban Granite |
| Buidtec Resources | In and Out Drywall | Ogilvie LLP | Company |
| C.W. Eavestrouthing | IXL Masonry | Pals Surveys and Associates | V-Twelve Contracting |
| Canada Lands Company | J.R.Paine & Associates | Points West Marketing | Village at Griesbach |
| City Glass & Supply | Karama Cleaning | Reliable Sheet Metal | Weiser Lock |
| Cloverdale Paint | Kevin Wilson Fine Art | RMQ Projects Ltd. | Westcon Precast |
| Concept Realty | Kore Building Supplies | Park Lighting | Westridge Cabinets |
| | Lafarge Canada | | Zeebee's Siding |

Sincerely, Rick Hinteregger, President Concept Homes, and Dave Hinteregger, Vice-President Concept Homes



Building in Edmonton and surrounding areas.

To plan your new home on an acreage, farm, or city lot, contact Margot Paull at 780-231-6546.



Concept® Homes

Main Office
10016 - 130 Avenue
Edmonton, Alberta
Canada T5E 6L5

Phone: 780-478-6069
Fax: 780-473-0445

www.concepthomes.ca



7445 Colonel Mewburn Way, Village at Griesbach, Edmonton

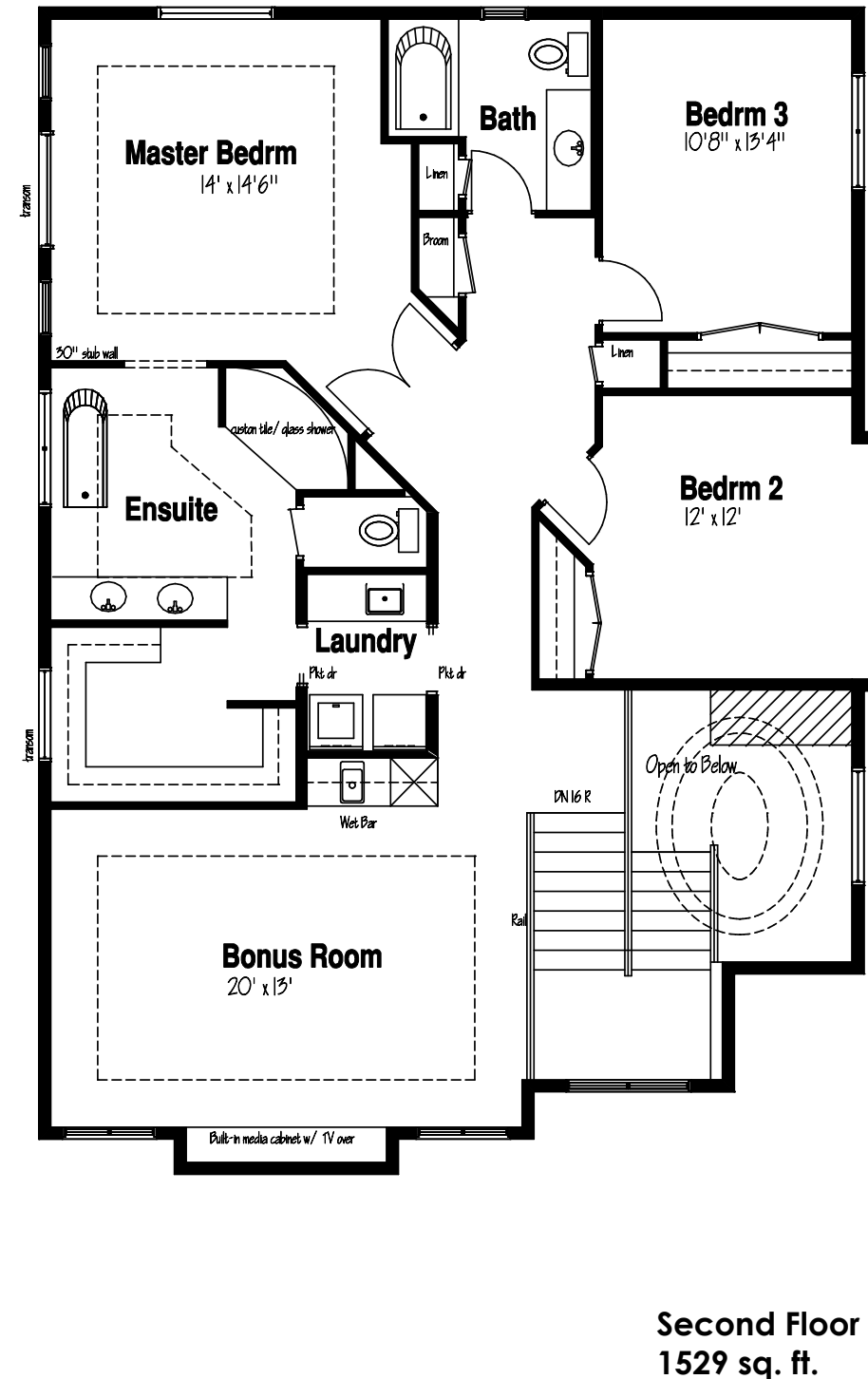
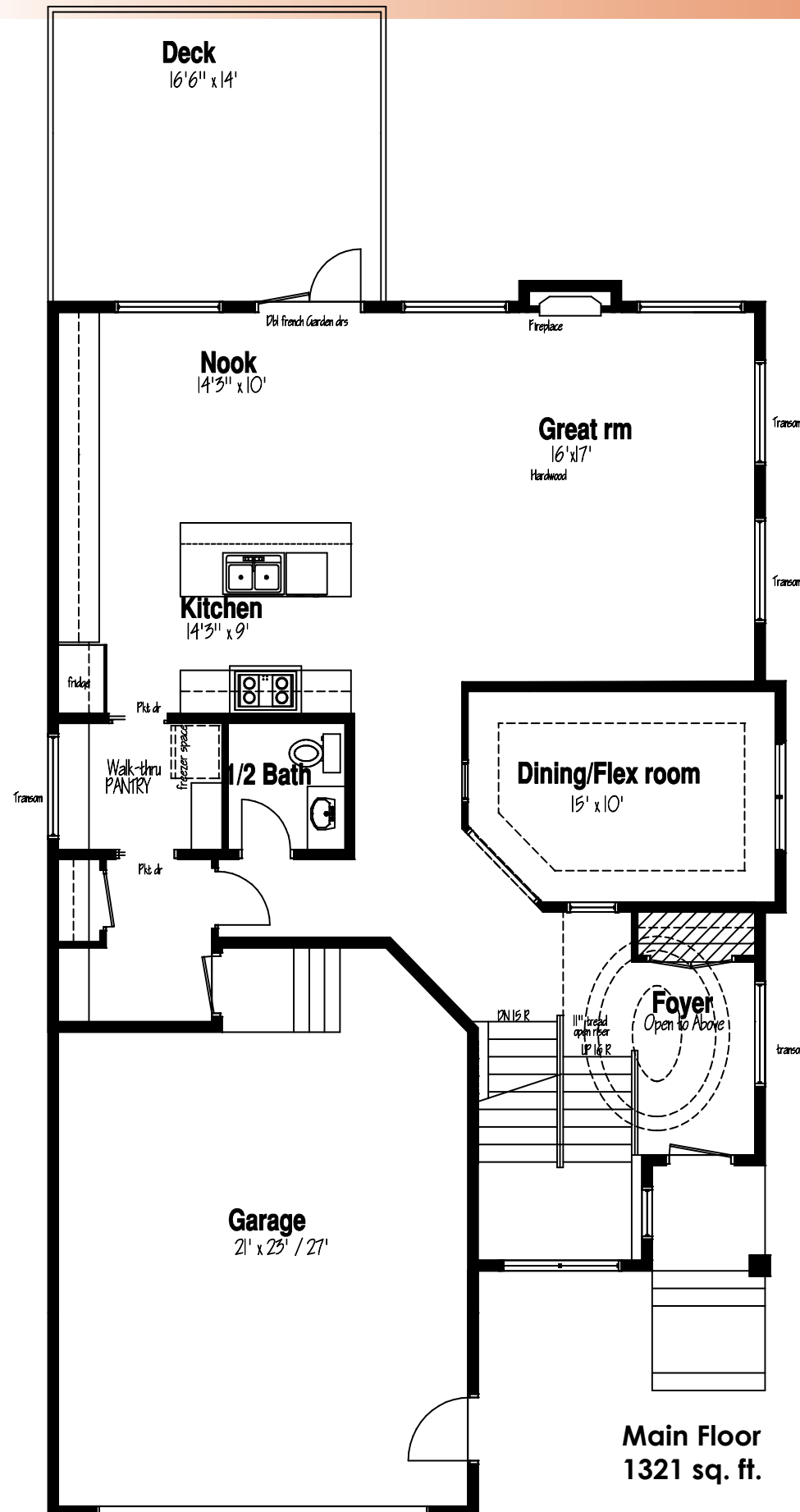
CONCEPT HOMES

Better Ideas
Better Built



The Fairmont

2,829 sq. ft. two-storey



- Custom 2,829 sq.ft., three bedroom, two-storey home with double attached garage
- Open floor plan with a convenient walk-through pantry off of garage and mud room entry
- Main floor flex room suitable for home office or formal dining
- Luxurious master ensuite with custom curved shower double sinks and free standing soaker tub
- Large great room with an attractive linear fireplace
- Large master bedroom walk in closet with unique dual access walk-through laundry room
- Spacious bonus room with wet bar and coffered ceiling, ideal for entertaining
- Fully furnished and well appointed with beautiful designer accents

