

The Somerset

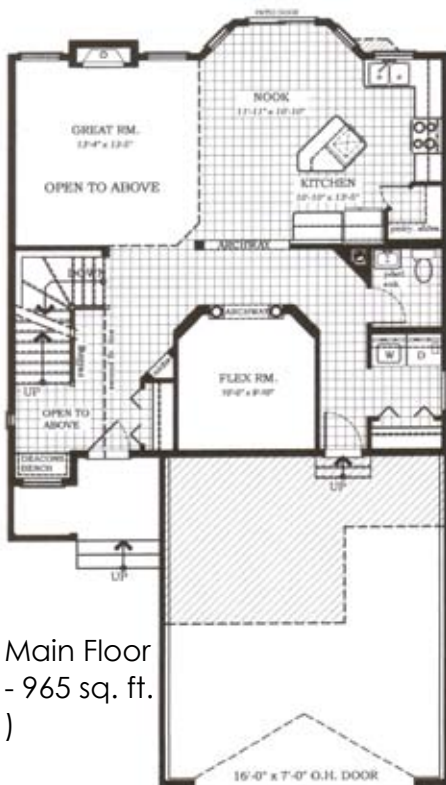


1783 sq. ft.
Two Storey

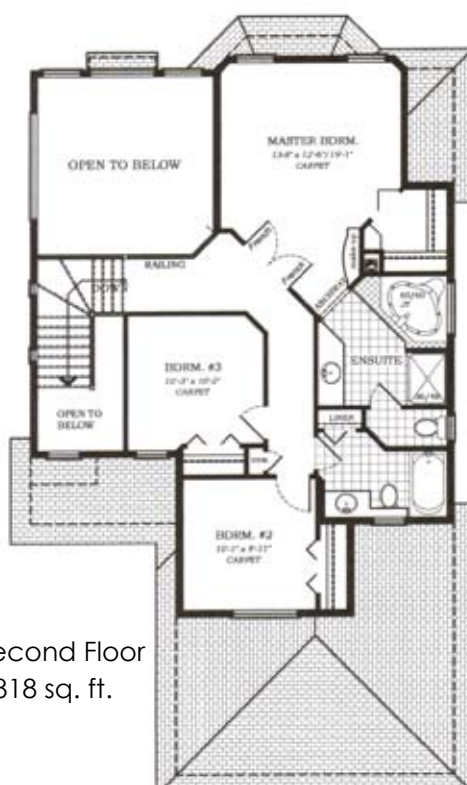
Style This open floor plan features a terrific balance of attractiveness and functional design. The impressive great room is open to the second floor and the spacious kitchen and eating area are sure to turn heads. Double french doors welcome you into the large,

private master bedroom and connecting ensuite that features a four foot shower and luxurious corner jetted tub. The Somerset is available in a three or four bedroom model.

The plans and elevations on this page may not be reproduced, used or copied in whole or in part, for construction purposes, without the written expressed permission of Concept Developments Ltd.



Main Floor
- 965 sq. ft.



Second Floor
- 818 sq. ft.



SINCE 1969

Concept Homes
Main Office

10016 130 Avenue
Edmonton, Alberta
Canada T5E 6L5

Ph: 780-478-6069

Fax: 780-473-0445